



### 11.7. Prescription on anticholinergic antidepressant drugs among the elderly (MH-9)

This indicator has been analysed together with the indicator Prescription of anticholinergics in the elderly (ELD-10).

### 11.8. Number of hospitalisations days in psychiatric hospital wards per capita (MH-10)

#### 11.8.1. Documentation sheet

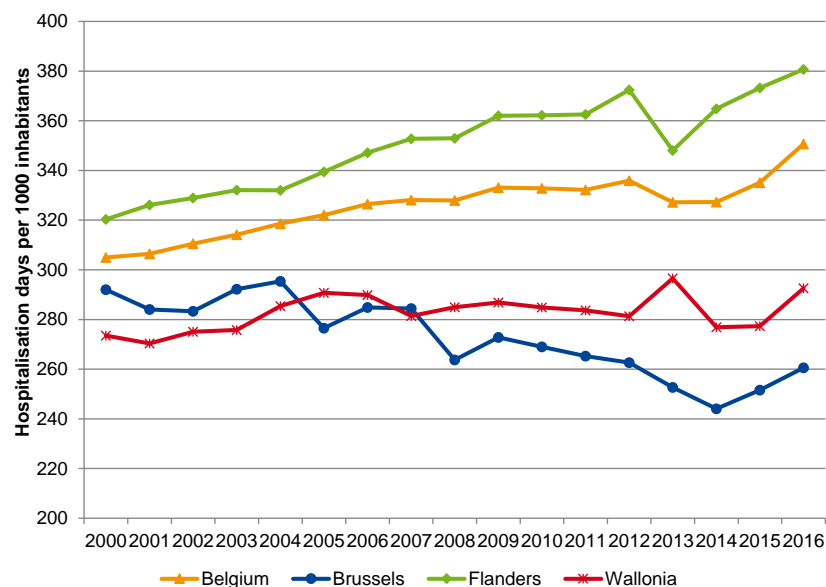
Description	Number of hospitalisations days in psychiatric hospital per capita
Calculation	<b>Numerator:</b> Number of hospitalisation days in psychiatric hospital or in psychiatric services of general hospital with at least one overnight. <b>Denominator:</b> Mid-year population
Rationale	This indicator provides contextual information on the utilisation of mental healthcare services outside ambulatory setting. It may reflect differences between regions, such as the health of the population, differing health service delivery models and variations in the availability and accessibility of specialised, residential and/or ambulatory and community-based services. We acknowledge that monitoring psychiatric hospital service use captures only a relatively small proportion of individuals who require mental healthcare services. However, in Belgium (like in other Western countries), recent reforms (e.g. art. 107 projects) in mental healthcare aim to shift the organisation of mental healthcare from a model that was based on 'large isolated institutions' towards a balanced care model. This implies that care is offered and delivered as close as possible to the patient's living environment, and only if necessary in an institution. As such, one may expect a decreasing trend of psychiatric hospitalisation days. <sup>1</sup>
Primary Data source	RPM – MPG from FPS Public Health Period 2000-2016
Periodicity	Yearly
Technical definitions and limitations	The <b>number of days</b> is calculated as the discharge date – admission date. This implies that one-day stays are not included in the calculation. Data is reported based on the region of the patient's residence.
International comparability	This indicator is not included in standardised international indicator sets. A similar indicator (mental Illness Patient Days rate) is also monitored by the Canadian Health Agency. <sup>2</sup>
Dimensions	Quality (Appropriateness)



### 11.8.2. Results

The number of psychiatric hospitalisation days per 1000 inhabitants increased from 305 in 2000 to 351 in 2016. The increase is steepest for Flanders (from 320/1000 in 2000 to 381/1000 in 2016 or +19%), while in Wallonia the increase is milder (from 274/1000 in 2000 to 293/1000 in 2016 or +7%). In Brussels, the trend is even decreasing (from 292/1000 in 2000 to 261/1000 in 2016 or -11%). For all three regions, there has been an increase in the last year (2016).

**Figure 170 – Number of hospitalisation days in psychiatric hospital or in psychiatric services in general hospital per 1000 capita, by patient region (2000-2016)**



Source: SPF SPSCAE – FOD VVVL (RPM – MPG)

### Key points

- **Despite recent reform efforts aiming to make a shift from inpatient mental health care towards ambulatory alternatives, the number of psychiatric hospitalization days increased from 305/1000 inhabitants in 2000 to 351/1000 in 2016. There are large differences between regions: a steep increase in Flanders (+19% from 2000 to 2016), a small increase in Wallonia (+7%) and a decrease in Brussels (-11%).**

### References

1. Eyssen M, Leys M, Desomer A, Senn A, Léonard C. Organization of mental health care for persons with severe and persistent mental illness. What is the evidence? Health Services Research (HSR). Brussels: Belgian Health Care Knowledge Centre (KCE); 2010 18/11/2010. KCE Reports 144 Available from: <https://kce.fgov.be/publication/report/organization-of-mental-health-care-for-persons-with-severe-and-persistent-mental->
2. Canadian Institute for Health Information (CIHI). Health Indicators 2013: Definitions, Data Sources and Rationale, May 2013. Ottawa, ON: 2013. Available from: [http://www.cihi.ca/CIHI-external/pdf/internet/IND\\_DEFIN\\_2013\\_EN](http://www.cihi.ca/CIHI-external/pdf/internet/IND_DEFIN_2013_EN)