

Medical practice variations

Imaging of the head (without angiography)

Analysis of the distribution and evolution of medical practice in Belgium, in terms of volume and expenditure per insured (analysis and trends by region, province and district), for the year **2021**



NIHDI – Healthcare Service – Directorate for Research, Development and Quality promotion

Appropriate care unit

Pascal Meeus, Virginie Dalcq, Delphine Beauport, Katrien Declercq, Lucien Hoekx, Kathleen Sierens, Benjamin Swine

Contact: appropriatecare@riziv-inami.fgov.be

Date of report: 13 June 2022

CONTENTS

CONTENTS	2
1. INTRODUCTION	3
2. SPECIFIC METHOD OF ANALYSIS	4
A. NIHDI NOMENCLATURE CODES SELECTED FOR ANALYSIS.....	4
B. PAST HISTORY OF NOMENCLATURE CODES	5
C. SOURCE OF DATA AND ANALYSIS PERIOD.....	6
D. SPECIFIC SELECTION CRITERIA	7
E. STANDARDISATION.....	7
3. RESULTS	8
A. NATIONAL STANDARDISED RATE OF USE.....	8
B. BREAKDOWN OF NOMENCLATURE CODES PROVIDED, BY VOLUME.....	9
C. SPECIALISATION OF HEALTHCARE PROVIDERS	10
D. SPECIALISATION OF PRESCRIBERS.....	11
E. STANDARDISED RATE OF USE BY SEX AND AGE GROUP	12
F. STANDARDISED RATE OF USE: HOSPITAL AND OUTPATIENT CARE	16
G. STANDARDISED RATE OF USE BY REIMBURSEMENT SCHEME	18
H. TRENDS IN STANDARDISED RATES OF USE	20
I. GEOGRAPHICAL VARIATIONS IN STANDARDISED RATES OF USE	24
J. STANDARDISED HEALTHCARE EXPENDITURE BORNE BY THE INSURANCE	29
4. KEY DATA SUMMARY	32
5. APPENDICES	33
A. ANALYSIS OF VARIANCE (ANOVA), EXCEPT BRUSSELS	33
B. FREQUENCY OF PRACTICE OCCURRENCES.....	34
C. PATIENT CARE SETTINGS.....	36
D. CODING VARIATIONS AND PRACTICE ALTERNATIVES.....	38

1. INTRODUCTION

The Appropriate Care Unit was set up within the NIHDI's Directorate for Research, Development and Quality under NIHDI's Administration Contract for 2016-2018¹. Article 35 of this contract refers to 'the setting up of an Appropriate Care Unit, aiming specifically to promote an integrated approach to the rational use of resources'. The Appropriate Care Unit has been up and running since the second quarter of 2017.

The tasks of the Unit were set out formally in the '2016-2017 Healthcare monitoring Action plan', published by NIHDI on 18 July 2016². This plan lists around thirty measures designed to make healthcare provision more efficient, by encouraging appropriate practice and tackling unnecessary or inappropriate care.

The plan states that one of the tasks of the Appropriate Care Unit is to analyse the 'appropriateness of care', in order to identify unexplained variations in consumption patterns, identified after standardisation. Such variations can potentially point to non-optimal use of resources.

'Variations in medical practice' documents report on the analyses carried out in this framework. Each report focuses on a particular topic.

In this document, we present the figures and graphs relating to analyses³ of practice in the area of Imaging of the head (without angiography), and give the explanations necessary to understand these.

We have deliberately chosen not to attempt to interpret the figures, preferring to present the results to experts who are in a better position to do so. This document has nevertheless been made available to the public in order to provide objective, open input to discussions on this issue.

¹ (Institut national d'assurance maladie-invalidité, 2016)

² (Institut national d'assurance maladie-invalidité, 2016)

³ Readers interested in the methodology used in these quantitative analyses should consult the document entitled 'Variations in practice – Methodology'.

2. SPECIFIC METHOD OF ANALYSIS

A. NIHDI nomenclature codes selected for analysis

The NIHDI nomenclature codes selected for the analysis are listed below:

Outpatient	Inpatient	Rates	Expenses	Label	Creation	Deletion	Group N	Value
455630	455641	yes	yes	Radiographie du crâne, de la face et des sinus ou des mastoïdes ou des rochers ou des articulations temporo-maxillaires ou des orbites ou des trous optiques ou des fentes sphénoïdales, minimum deux clichés, quel que soit le nombre de clichés supplémentaires	01-04-1985		N50	N65
455696	455700	yes	yes	Radiographie des os nasaux	01-04-1985		N50	N28
458673	458684	yes	yes	Tomographie du crâne commandée par ordinateur, avec ou sans moyen de contraste, avec enregistrement et clichés, 10 coupes au minimum pour l'ensemble de l'examen	31-12-1986		N50	N180
458732	458743	yes	yes	Tomographie des rochers et/ou de la selle turcique, commandée par ordinateur, avec ou sans moyen de contraste, avec enregistrement et clichés, dans une série successive de coupes égales ou inférieures à 2 mm : 20 coupes au minimum	31-12-1986		N50	N275
459395	459406	yes	yes	Examen d'IRM de la tête (crâne, encéphale, rocher, hypophyse, sinus, orbite(s) ou articulations de la mâchoire), minimum 3 séquences avec ou sans contraste, avec enregistrement soit sur support optique, soit électromagnétique	13-08-1999		N50	N180
459535	459546	yes	yes	Etude fonctionnelle par résonance magnétique de l'encéphale (technique Bold) avec collecte séquentielle des données avec analyse quantitative via un système de comptage (ordinateur) avec courbes d'activité dans le temps et/ou tableaux de mesures et/ou images paramétriques, minimum 3 séquences, avec enregistrement sur support soit optique, soit électromagnétique	13-08-1999		N50	N500
459675	459686	yes	yes	Tomographie commandée par ordinateur (CT) avec moyen de contraste du massif facial	01-02-2012		N50	N180
459690	459701	yes	yes	Tomographie commandée par ordinateur (CT) sans moyen de contraste du massif facial	01-02-2012		N50	N117
459874	459885	yes	yes	Tomographie du cerveau commandée par ordinateur, avec ou sans moyen de contraste, avec enregistrement et clichés, effectuée simultanément avec un examen PET, à des fins diagnostiques	05-05-2016		N50	N180
460375	460386	yes	yes	Examen duplex couleur des vaisseaux intracrâniens	01-06-1991		N50	N83
466631	466642	yes	yes	Radiographie du crâne, de la face et des sinus ou des mastoïdes ou des rochers ou des articulations temporo-maxillaires ou des orbites ou des trous optiques ou des fentes sphénoïdales, minimum deux clichés, quel que soit le nombre de clichés supplémentaires	01-11-1994		N50	N65
469792	469803	yes	yes	Examen duplex couleur des vaisseaux intracrâniens	01-04-2003		N50	N83

This table shows the NIHDI nomenclature codes selected for this analysis, stating whether or not they were included in the analyses of services and expenditure, and giving, for each one, a description, dates of creation and deletion, where appropriate, their N group (in the NIHDI nomenclature) and their value.

B. Past history of nomenclature codes

Outpatient	Inpatient	Date	Label
458673	458684	01-11-1992	Tomographie du crâne et/ou du massif facial, commandée par ordinateur, avec et/ou sans moyen de contraste, avec enregistrement et clichés, 10 coupes au minimum pour l'ensemble de l'examen
458673	458684	01-02-2012	Tomographie du crâne commandée par ordinateur, avec et/ou sans moyen de contraste, avec enregistrement et clichés, 10 coupes au minimum pour l'ensemble de l'examen
458673	458684	05-05-2016	Tomographie du crâne commandée par ordinateur, avec ou sans moyen de contraste, avec enregistrement et clichés, 10 coupes au minimum pour l'ensemble de l'examen
459690	459701	01-02-2012	Tomographie commandée par ordinateur (CT) ou tomographie à faisceau conique (Cone Beam) commandée par ordinateur (CBCT) sans moyen de contraste du massif facial
459690	459701	01-06-2015	Tomographie commandée par ordinateur (CT) sans moyen de contraste du massif facial



This table displays the historic evolution of the definitions of the NIHDI-nomenclature codes taken into account for this analysis, if modifications were implemented during the period 2011-2021.

C. Source of data and analysis period

The data used in the analyses have been taken from the following databases:

Document N	for the utilisation rate and amount of expenses of insured persons (who meet the selection criteria) whose age, sex, preferential regime and residence are known 2011-2021
Document P	for the utilisation rate and amount of expenses of insured persons (who meet the selection criteria) by type of medical specialities in 2021
Document P, SHA, ADH	for the practice occurrences and analysis of patient care settings in 2019
-	-

Analysis period	2011-2021
------------------------	-----------



'N Documents' are monthly data sent by the sickness funds to NIHDI, within three months. These data show the number of services provided, dates and the fees involved. Every six months, these data are compiled by the insurers, which also add data on patients: age, gender, social category and district of residence. N Documents, however, cannot be used to analyse the combinations of services received by individual patients.

'P Documents' are six-monthly data sent by the sickness funds to NIHDI, within four months. These data show the services provided, the service-provider, the prescriber, the place of provision of service, and the hospital where patients were treated. P Documents can be used to monitor medical consumption and pricing, but not (yet) to analyse services per patient.

'Documents SHA, ADH' are sent annually and within six months by the insurer-organisations to the NIHDI. They include all the services provided respectively in day admission and standard hospitalisation, in general hospitals per hospital stay.

D. Specific selection criteria

Several filters may have been applied to the data, so that only one section of the population is considered in the analyses. If so, the filters used are shown in the table below:

FILTERS APPLIED TO DATA	
Sex	women and men
Age	all
-	-

E. Standardisation

The data are standardised before analysis per year, based on age, sex and preferential regime per arrondissement, province and region (standardization based on population in 2021).



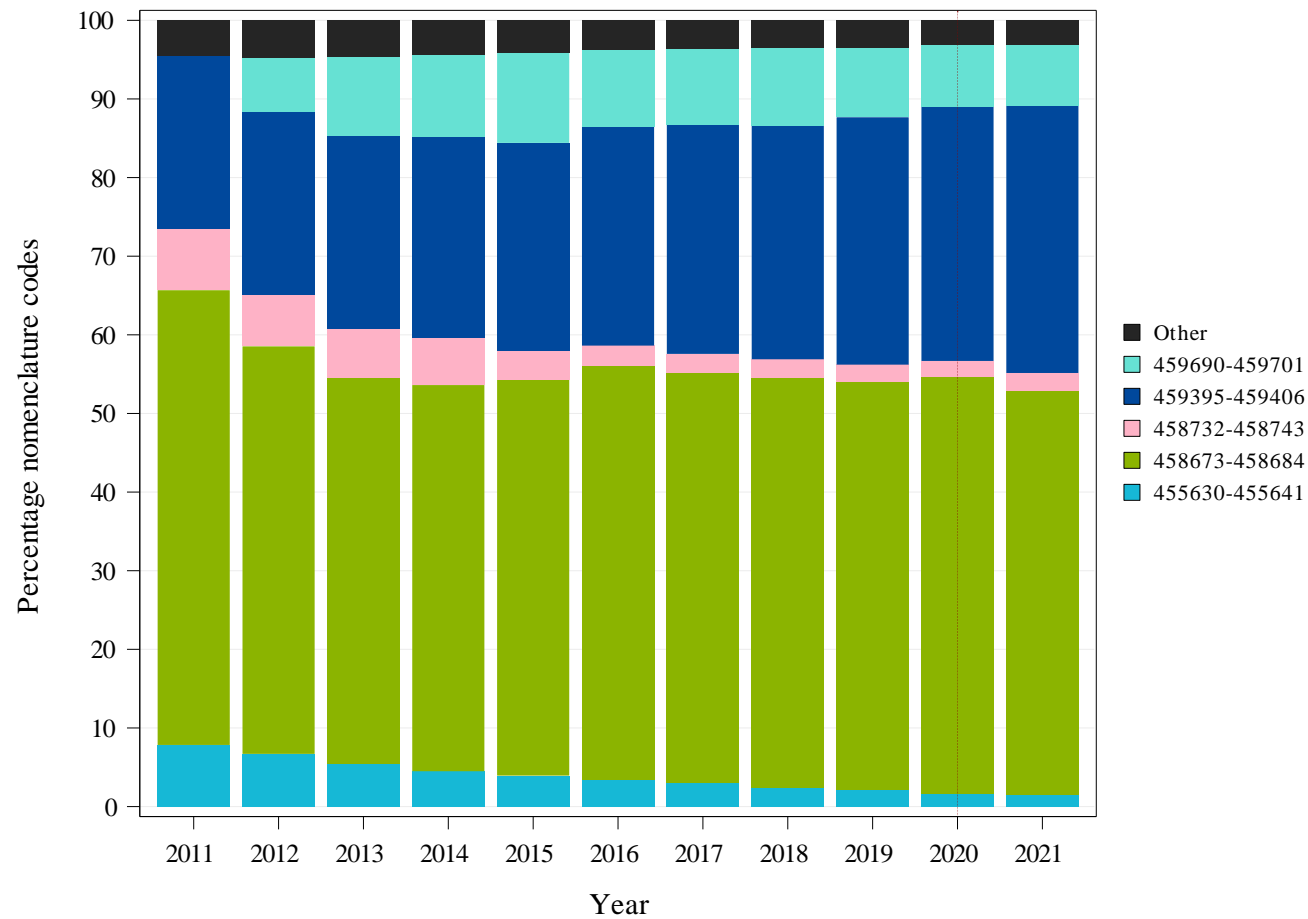
Standardisation renders populations comparable in relation to one or several criteria. If a difference is observed between these populations, we can therefore assume that it is not due to the criteria covered by the standardisation process.

3. RESULTS

A. National standardised rate of use

	TOTAL
Average number of interventions per year	819.329
Standardised rate of use per 100 000 insured persons	7.146

B. Breakdown of nomenclature codes provided, by volume



See page 4 for details about the NIHDI nomenclature codes selected for analysis.

Note : The year 2020 was highlighted by a vertical dashed line, in order to draw the attention on the impact of the COVID-19 crisis.

C. Specialisation of healthcare providers

Specialisation of the provider	Total providers	Concerned providers	% Providers	Median of H.C. services	Q3 of H.C. services	% Total H.C. services
Radiology	1653	1478	89%	450	756	98,80%
Other specialities	7569	166	2%	51	65	1,20%
Total	9222	1644	18%	379	718	100,00%



This table shows the following non-standardised data, by medical specialities (figures for the year 2021):

- The number of service-providers per specialisation who have recorded at least one service (the figures are exceptionally extrapolated from a single semester if an * is indicated in the header, otherwise the full year is taken into account);
- The number of service-providers recording services under the nomenclature codes selected for this analysis;
- The service-providers for these codes as a percentage of the total number of service-providers recording provision of at least one service;
- The median number and third quartile of services per service-provider (recording provision under these codes);
- The service percentage, i.e. the number of services recorded for this specialisation as a percentage of total services provided.

D. Specialisation of prescribers

Specialisation of the prescriber	Total prescribers	Concerned prescribers	% Prescribers	Median of prescriptions	Q3 of prescriptions	% Prescriptions
Specialists in training	8671	5417	62%	10	32	18,58%
Neurology	754	671	89%	153	306	16,59%
General practitioners	17675	11648	66%	6	12	14,46%
Acute and emergency medicine	668	601	90%	109	171	9,60%
Otorhinolaryngology	812	675	83%	79	135	7,60%
Anesthesia-reanimation	2808	1272	45%	4	16	4,12%
Neurosurgery	273	223	82%	88	158	3,27%
Geriatrics	421	366	87%	58	98	3,11%
Internal medicine	1441	883	61%	6	15	2,74%
General surgery	1855	753	41%	3	8	2,64%
General practitioners in training	4097	2031	50%	4	8	2,30%
Pneumology	863	550	64%	20	41	2,17%
Non-specialized physicians	3396	730	21%	3	12	1,50%
Medical oncology	353	290	82%	27	48	1,37%
Paediatrics	2025	1223	60%	5	10	1,31%
Cardiology	1412	848	60%	3	7	1,13%
Other specialities	21637	6246	29%	246	251	7,50%
Total	69161	34427	50%	6	16	100.00%

This table shows, in order, the following non-standardised data per specialities (figures for the year 2021):

- The number of prescribers who have prescribed at least one service (the figures are exceptionally extrapolated from a single semester if an * is indicated in the header, otherwise the full year is taken into account);
- The number of prescribers prescribing the nomenclature codes selected for this analysis;
- The prescribers prescribing these codes as a percentage of the number of prescribers prescribing at least one service;
- The median number and third quartile of services per prescriber (prescribing these codes);
- The percentage of services prescribed, i.e. the number of prescriptions issued for this specialisation as a percentage of total services prescribed.

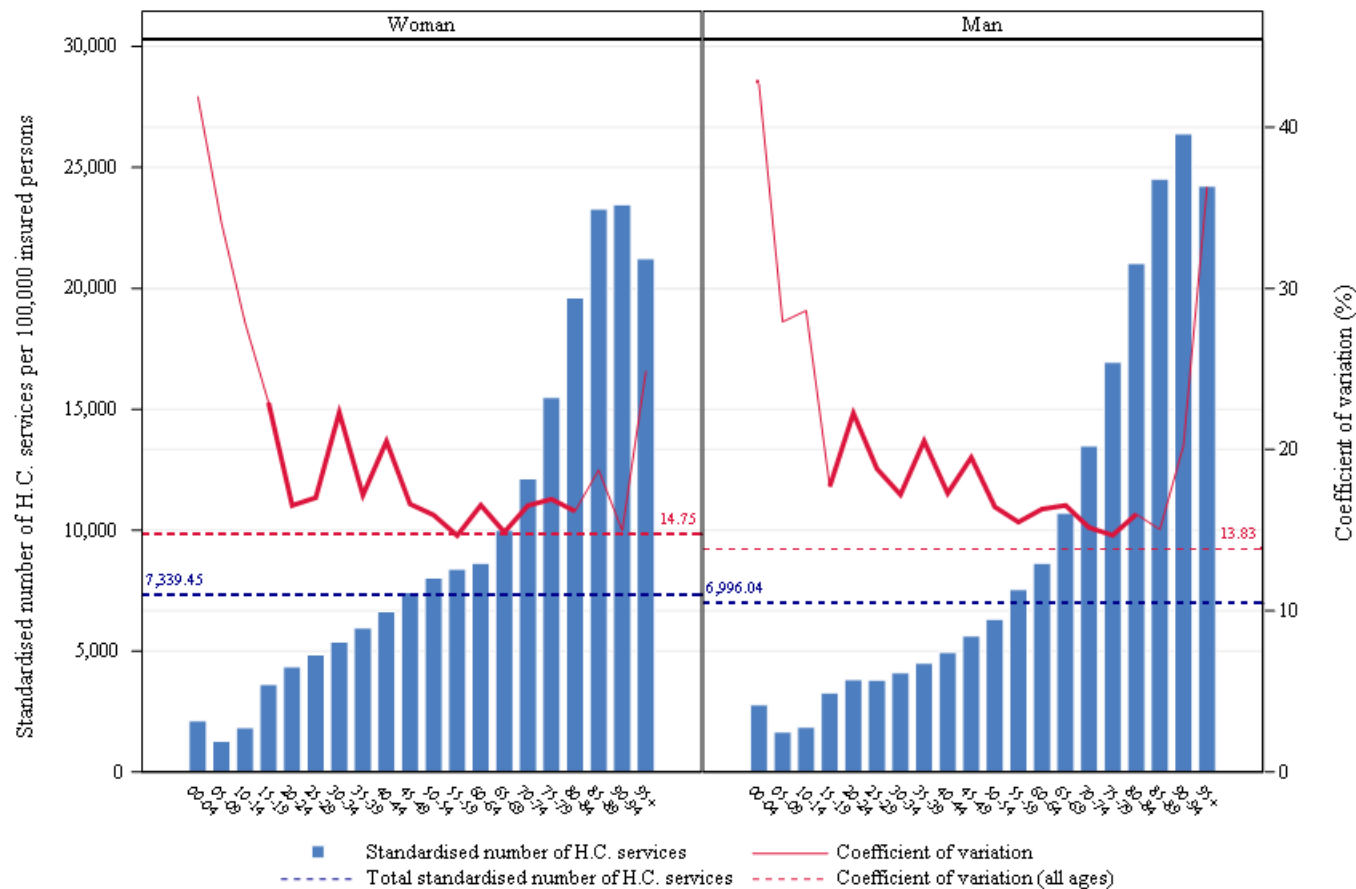
E. Standardised rate of use by sex and age group

	TOTAL
<i>Average number of interventions per year</i>	819.329
Median age (years)	61
Mean age (years)	57,76
Max/Min Ratio of the median age (by district)	1,23
Percentage of women	54,77%

Max/Min Ratio:

The max/min ratio measures the dispersion of values. It is calculated as the ratio of the maximum value found for the variable, in all districts, to the minimum value. If this minimum value is equal to zero, the max/min ratio cannot be calculated, and is reported as 'NA' ('not applicable').

Specialists in training - Imaging of the head (without angiography)

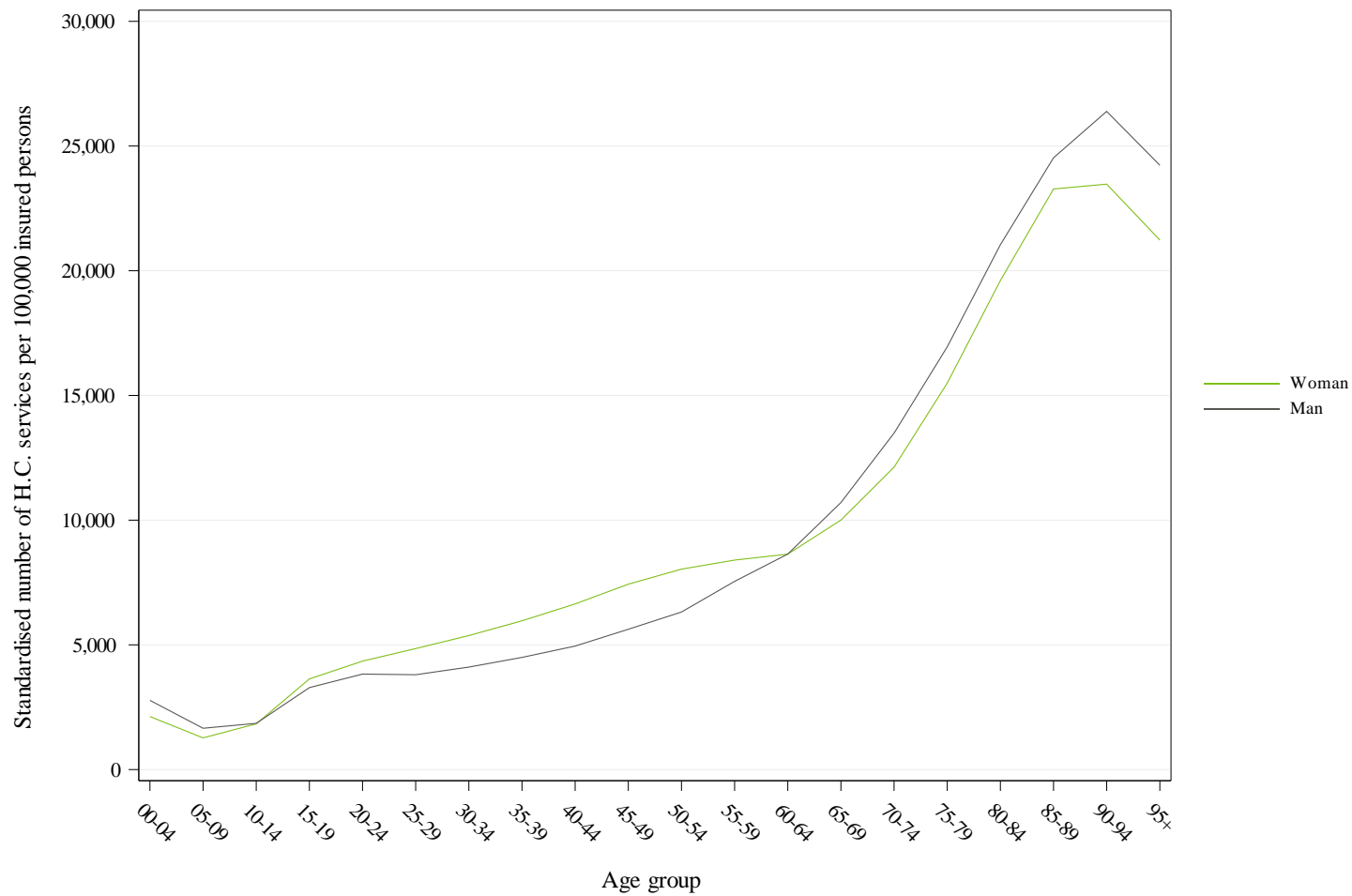


This figure is made up of bar charts for each sex. The **coefficient of variation**, shown by the red line, measures the relative dispersion of the standardised rates of use observed for each district, by age group and sex (standard deviation divided by the mean). This line is shown in bold for age groups where the coefficient of variation can be validly interpreted (i.e. for age groups in which there are sufficient insured persons per district to allow for a proper comparison).

The left-hand vertical axis of the graph represents the standardised rate of use, and the right-hand axis the coefficient of variation. The horizontal dotted lines show the total values of the standardised rates of use (in blue) and of the coefficient of variation (in red).

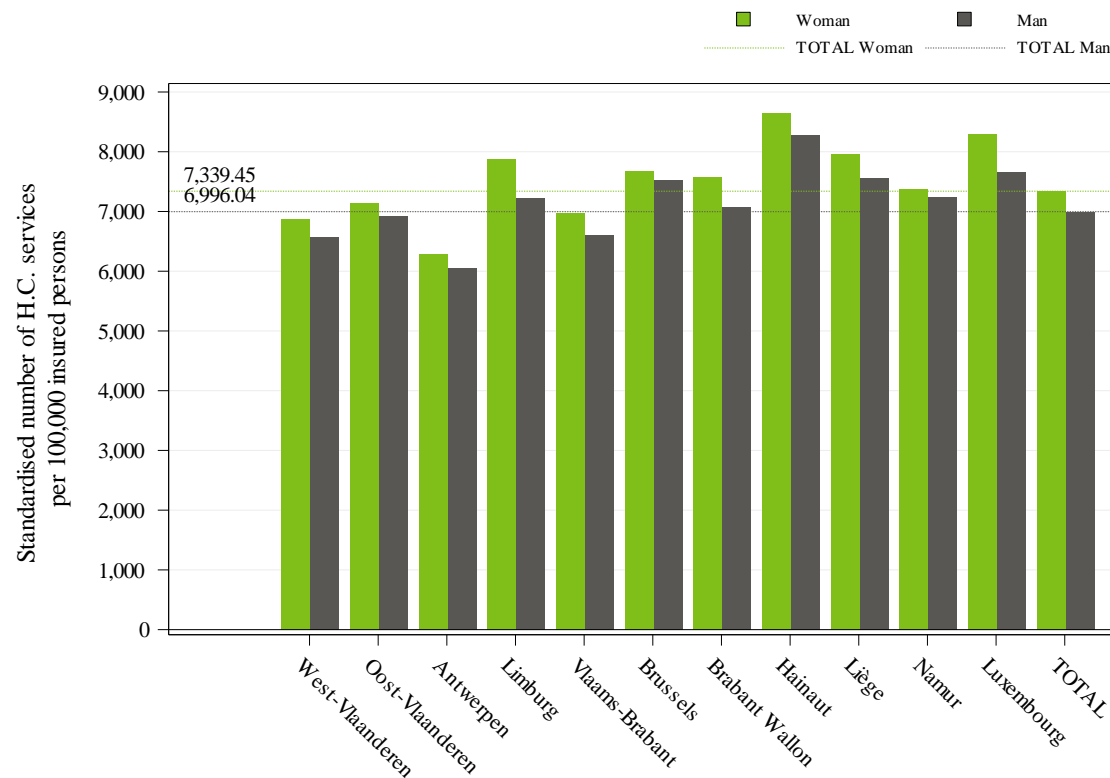
Standardised rate of use per 100 000 insured persons, and coefficient of variation for the districts, by age group and sex, for the year 2021

Specialists in training - Imaging of the head (without angiography)



Comparison of the standardised rates of use by sex (per 100 000) in 2021

Specialists in training - Imaging of the head (without angiography)

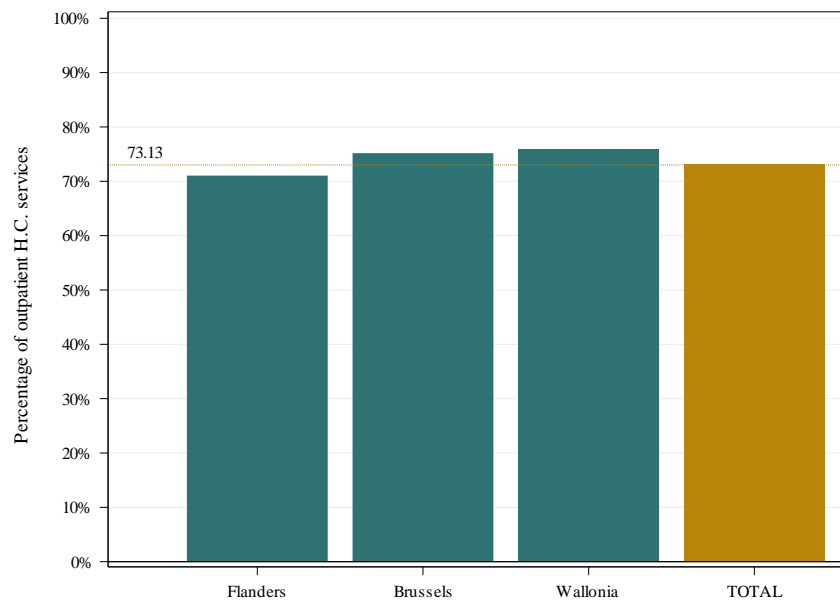


This histogram shows standardised rates of use by province and by sex. The grey bars show the rates for men, while the green bars show the rates for women, for each province. The grey and green broken lines show the total standardised rates of use, again grey for men, green for women.

Standardised rate of use per 100 000 insured persons, by sex and by province for the year 2021

F. Standardised rate of use: hospital and outpatient care

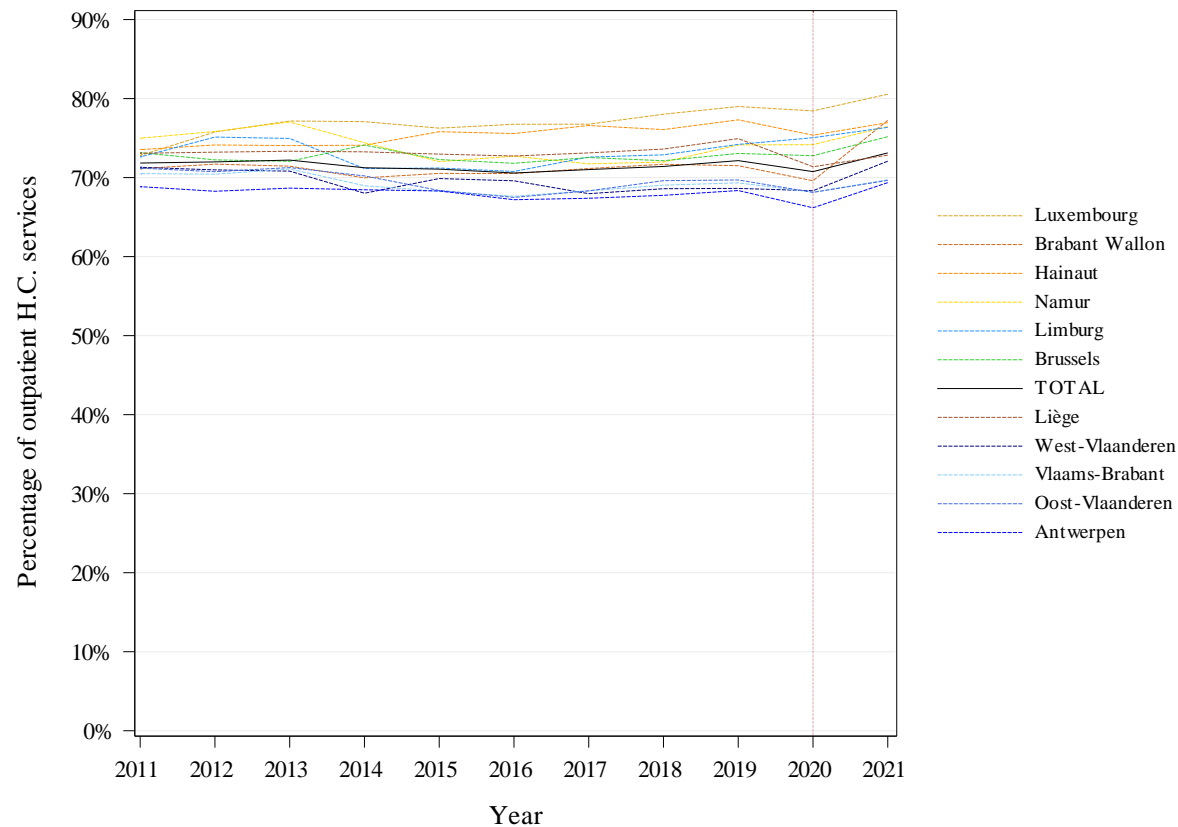
	TOTAL
<i>Average number of interventions per year</i>	819.329
Percentage of out-patient care	73,13%
Max/min ratio of out-patient care percentage (by district)	1,37



Percentage of outpatient care, total and by region

This graph shows the percentage of outpatient services (including hospital day admissions), i.e. the number of outpatient services provided as a percentage of total services (outpatient and hospital stays). Besides the bar per region, there is a bar for the entire Belgian population. A dotted line also shows this overall ratio.

Specialists in training - Imaging of the head (without angiography)



Change over time in the percentage of outpatient care, by province

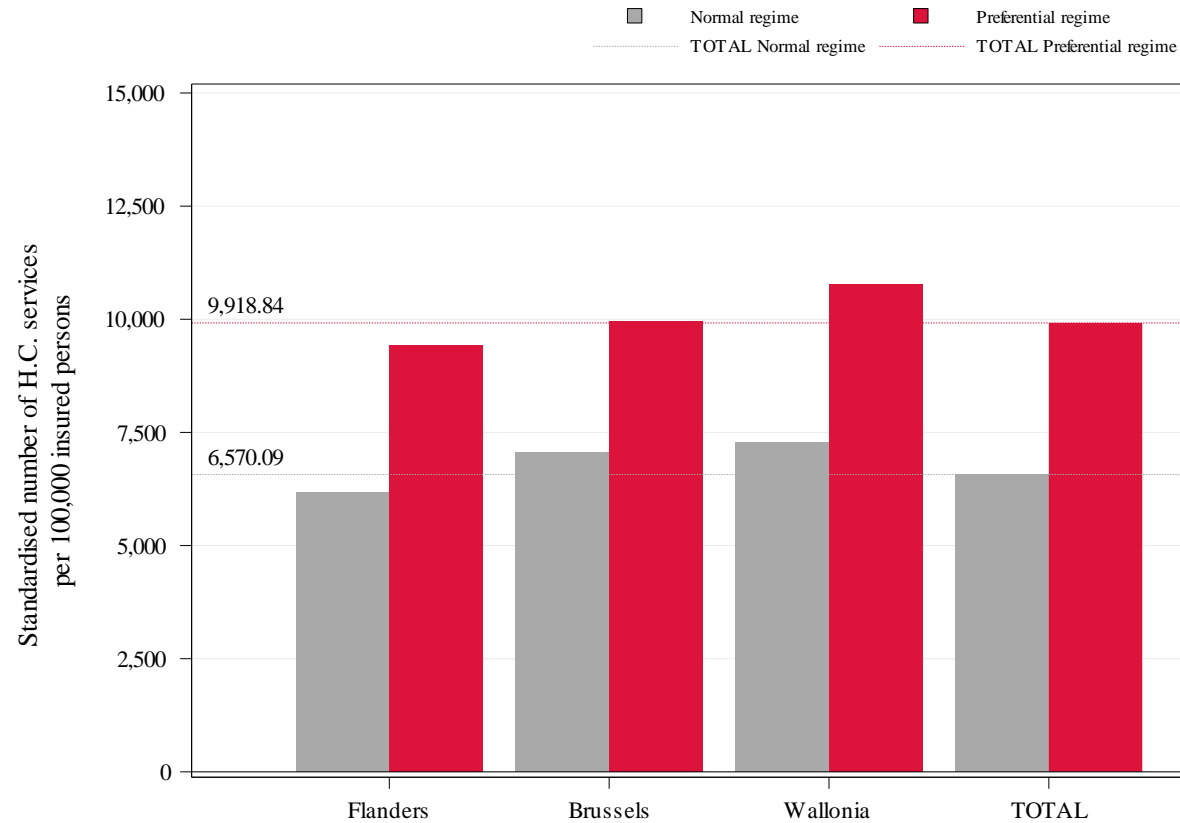
N.B.:

- The year 2020 was highlighted by a vertical dashed line, in order to draw the attention on the impact of the COVID-19 crisis
- A complementary document to this chapter, about the handling of patients per health care sector, is [enclosed in this report](#) (cf. p.36)

G. Standardised rate of use by reimbursement scheme

	TOTAL
<i>Average number of interventions per year</i>	<i>819.329</i>
Percentage provided under the preferential reimbursement scheme	28,21%
Standardised rate of use with preferential reimbursement scheme (per 100 000)	9.919
Standardised rate of use without preferential reimbursement scheme (per 100 000)	6.570
Ratio Preferential scheme /General scheme	1,51

Specialists in training - Imaging of the head (without angiography)



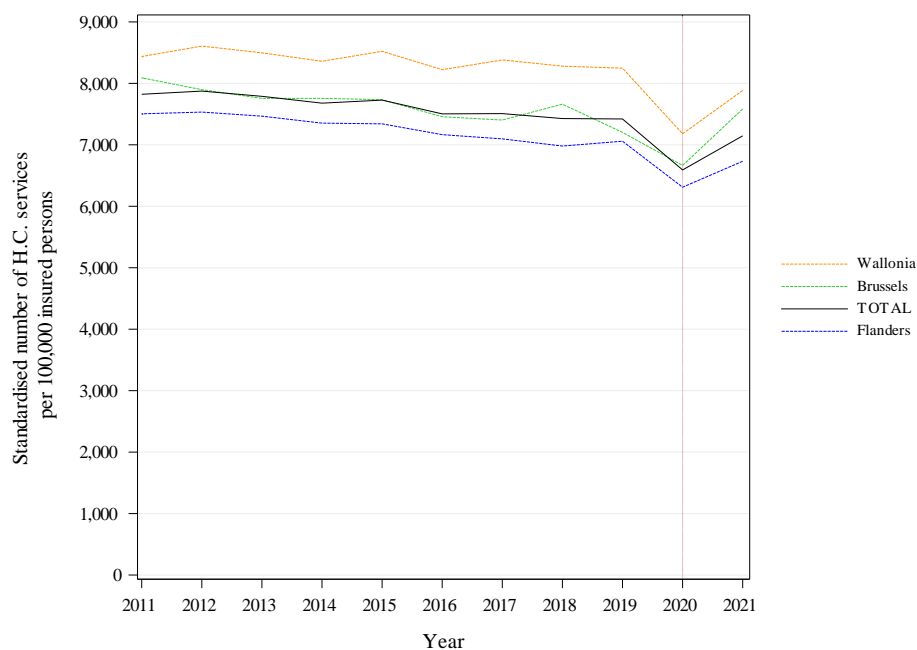
Standardised rate of use by reimbursement scheme and by region

This graph shows the standardised rates of use with (in red) and without (in grey) the preferential reimbursement scheme, by region and in total. The red and grey dotted lines show the overall standardised rates of use, with and without the preferential reimbursement scheme, respectively.

H. Trends in standardised rates of use

	TOTAL
<i>Average number of interventions per year</i>	819.329
Trend (2011-2021)	-0,90%
Trend (2011-2019)	-0,66%
Trend (2019-2021)	-1,87%

These trends correspond to the average annual growth rate.

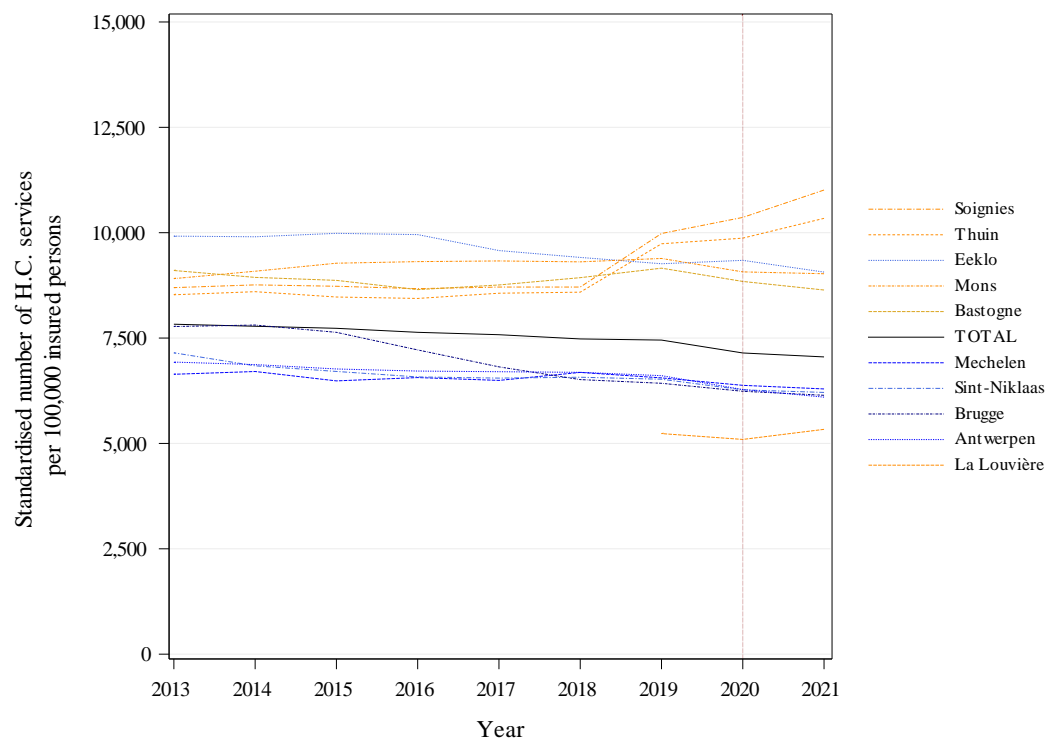


This graph shows a coloured curve for each region and a black curve for the entire Belgian population. The x-axis shows the years, and the y-axis shows the standardised rate of use per 100 000 insured persons.

Note : The year 2020 was highlighted by a vertical dashed line, in order to draw the attention on the impact of the COVID-19 crisis.

Trends in the standardised rate of use per 100 000 insured persons, by region

Specialists in training - Imaging of the head (without angiography)



Trends in the standardised rate of use per 100 000 insured persons, by district

This graph shows a colored line for each district and a black line for the entire Belgian population. The x-axis shows the years, and the y-axis shows the standardised rate of use per 100 000 insured persons.

To better highlight changes over time, the rates shown are **rolling averages** of the rates for the three years preceding the year in question (including the year itself).

The graph only shows the five districts with the highest average rates and the five districts with the lowest average rates over the last 3 years studied.

Note : The year 2020 was highlighted by a vertical dashed line, in order to draw the attention on the impact of the COVID-19 crisis.

Specialists in training - Imaging of the head (without angiography)

		Rate of use	Annual increase			Structural break
		2021 (per 10 ⁵ insured)	2011-2021	2011-2019	2019-2021	
Provinces	West Flanders	6.703,06	-1,69%	-1,38%	-2,93%	NS
	East Flanders	7.012,84	-0,93%	-0,88%	-1,11%	NS
	Antwerp	6.147,79	-1,28%	-0,69%	-3,60%	NS
	Limburg	7.542,95	-0,75%	0,14%	-4,26%	*
	Flemish Brabant	6.763,12	-0,55%	-0,73%	0,16%	NS
	Brussels	7.583,10	-0,64%	-1,44%	2,61%	NS
	Walloon Brabant	7.300,01	-0,85%	-1,04%	-0,08%	NS
	Hainaut	8.425,31	-0,02%	0,67%	-2,73%	NS
	Liège	7.728,36	-0,98%	-0,75%	-1,90%	NS
	Namur	7.258,97	-1,85%	-1,43%	-3,54%	NS
	Luxembourg	7.969,81	-0,39%	0,02%	-1,99%	NS
Regions	Flanders	6.732,49	-1,08%	-0,76%	-2,34%	NS
	Brussels	7.583,10	-0,64%	-1,44%	2,61%	NS
	Wallonia	7.884,96	-0,67%	-0,28%	-2,22%	NS
TOTAL		7.146,24	-0,90%	-0,66%	-1,87%	NS

Trends in the rates of use, by province and region

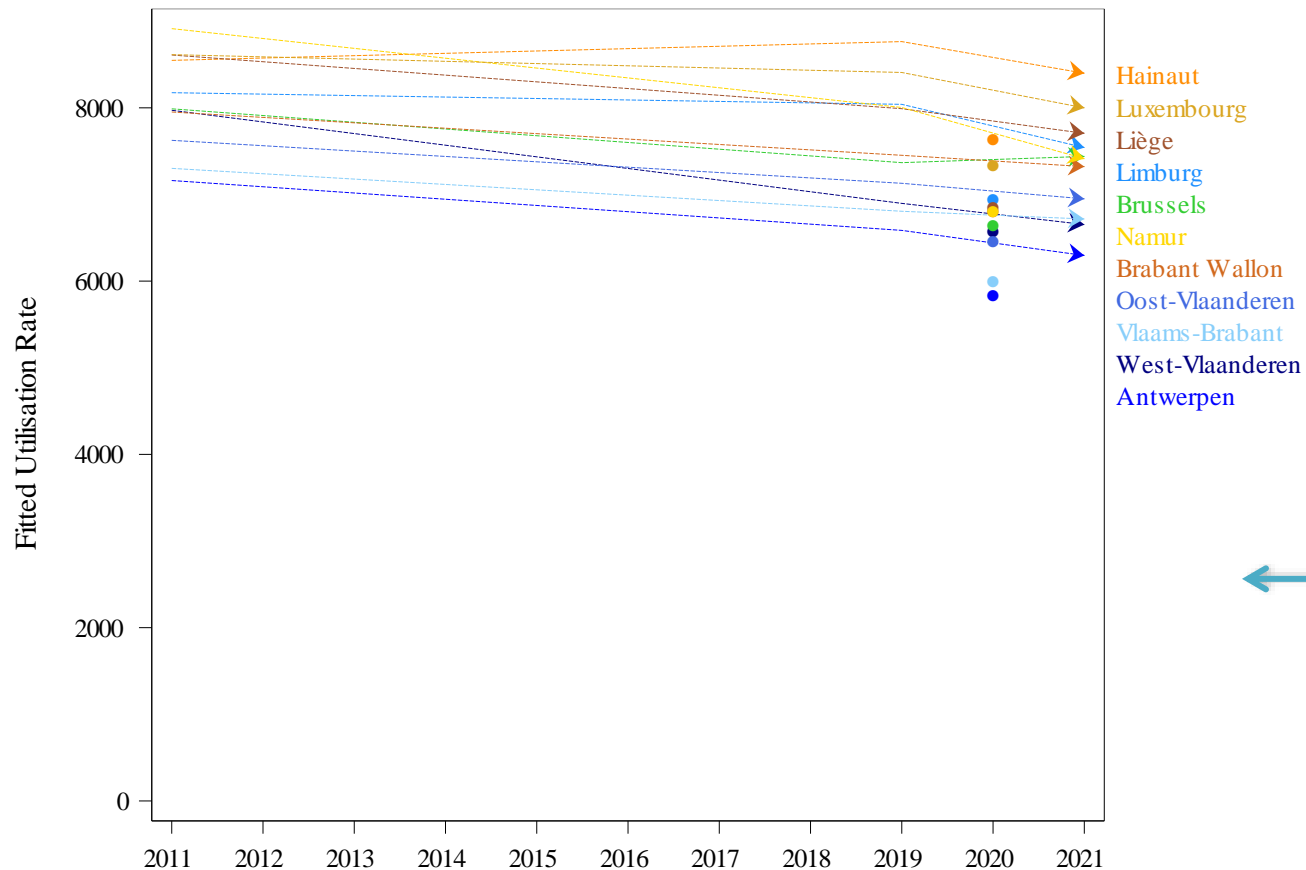
This table reports the standardised **rates of use** for the last year analysed (2021), as well as the average **rates of increase**, by province, by region and in total, for the entire period (2011-2021), for the last three years (2019-2021) and for the period preceding the last three years (2011-2019)

In order to find out whether the trend in the last three years differs from that in the years before, a linear mixed model was fitted in two steps. In the first step a change in trend on the national level is tested. If this test is significant, in a second step, the model tests whether the difference in trend is significant for each province, region and at the national level. The data of 2020 are excluded from the models.

The significance of the test for a change in trend is reported in the Structural break column : * P-value ≤ 0.05 / ** P-value ≤ 0.01 / *** P-value ≤ 0.001 and NS for a non-significant result.

'NA' is shown where the nomenclature codes selected for the analysis have not been used for the entire three-year period or when the statistical tests cannot be evaluated.

Specialists in training - Imaging of the head (without angiography)



Trend break assessment model by province – Regression lines

Regression lines per province showing a possibly different slope for the last three years (2019-2021) compared to the years before (2011-2019).

Data of 2020 was excluded from this analysis, but is indicated on the graph for information.

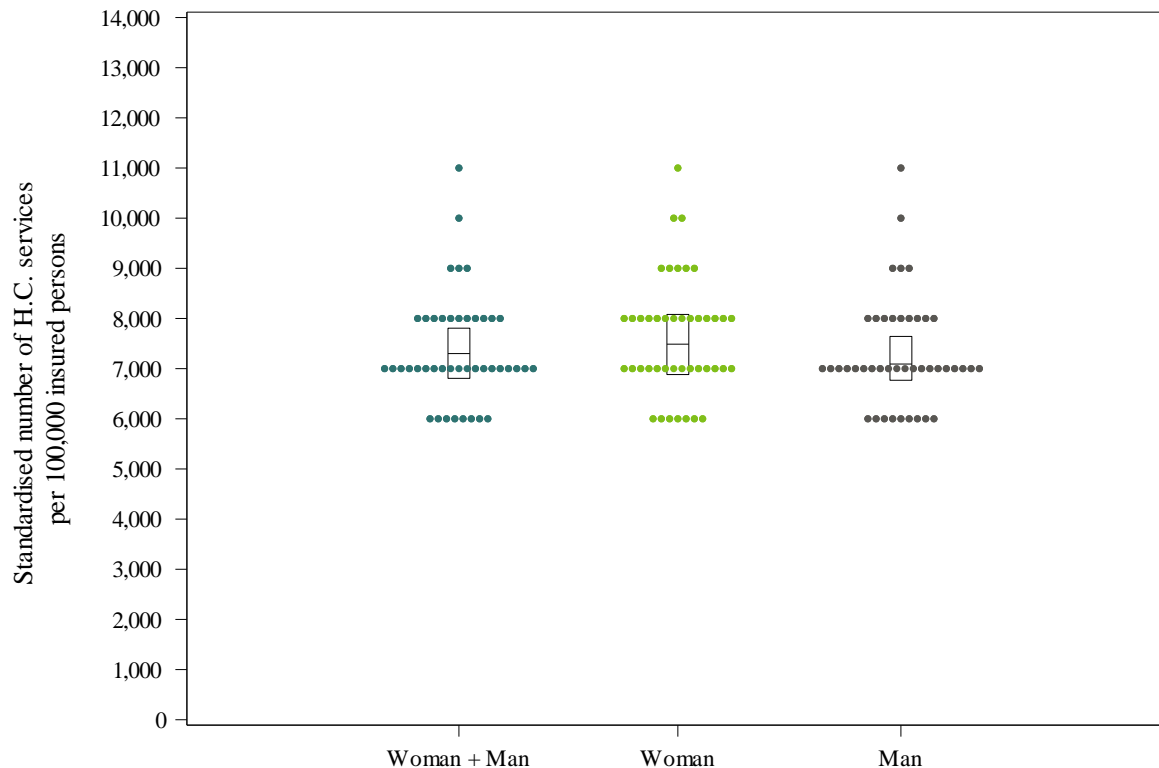
I. Geographical variations in standardised rates of use

	TOTAL
<i>Average number of interventions per year</i>	819.329
Coefficient of Variation (2021)	14,09
Max/Min Ratio* of the standardised rates of use (by region)	1,17
Max/Min Ratio* of the standardised rates of use (by district)	1,85

Coefficient of Variation (2019-2021)	14,61
Coefficient of Variation (2011-2013)	9,13
<i>Statistically significant difference? ($p \leq 0.05$)</i>	<i>No</i>

* An 'NA' result indicates a ratio which cannot be calculated, i.e. the minimum value = zero (cf. E. Standardised rate of use by sex and age group)

Specialists in training - Imaging of the head (without angiography)



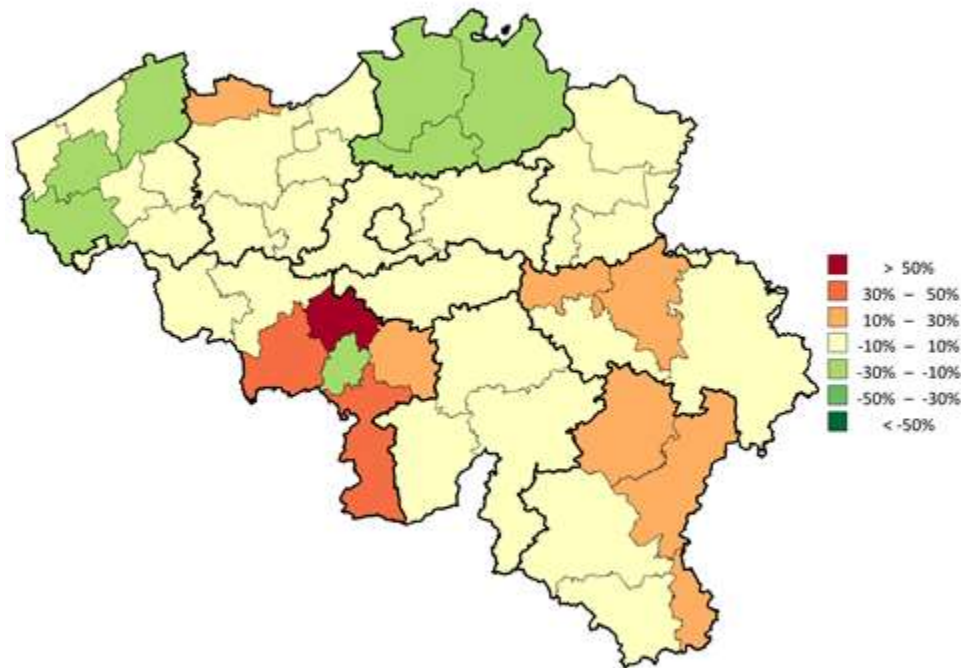
'Dot plot' showing standardised rates of use by district, by sex

A **dot plot** is a distribution chart, which is useful for highlighting groups in the data, gaps in the distribution and outliers. Here, each dot represents the rate of use of a district, for its entire population or broken down by sex.

The rates are rounded to the nearest unit, ten, hundred, etc., depending on the value of the maximum rate, in order to better group the values.

The graph also shows a box with the 25th, 50th and 75th percentiles of the non-rounded standardised rates of use for all patients. The bottom line of the box represents the 25th percentile, while the upper line represents the 75th percentile. The line inside the box represents the 50th percentile.

Specialists in training - Imaging of the head (without angiography)



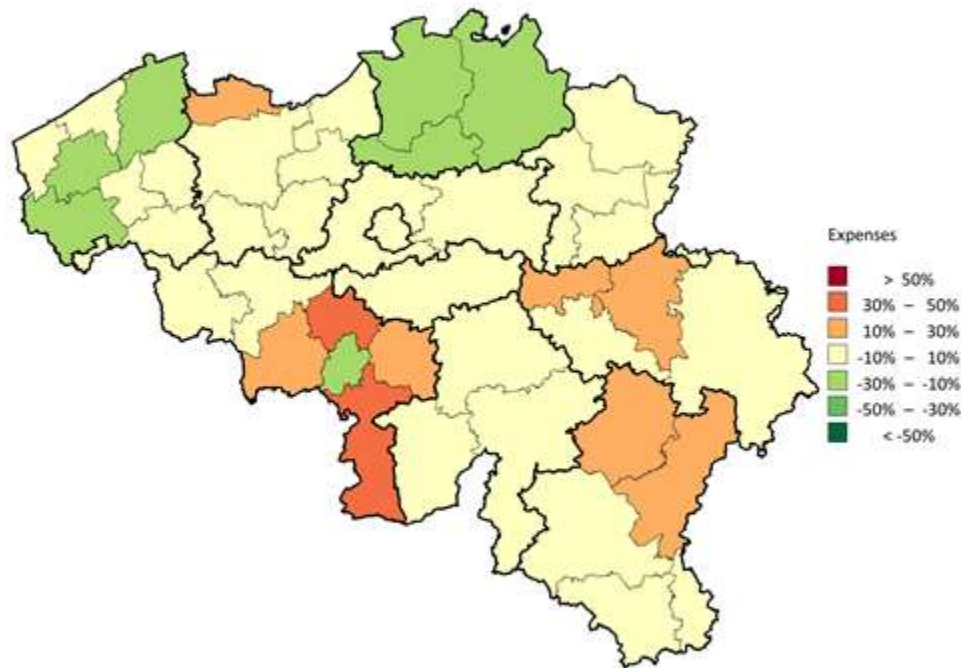
Map showing distribution of standardised rates of use, by district

On this map of Belgium, thin lines show the boundaries of the districts, while thick lines show the provincial borders. The districts are coloured using a colour scale based on the level of rate of use in the district compared to the Belgian national rate (overall rate). This ratio is expressed as a percentage: e.g. 0% if the district rate is equal to the overall rate, 20% if the rate is 20% above the overall rate, and -20% if the rate is 20% below the overall rate. The percentages are calculated using the standardised rates of the last year analysed, and are displayed in bands of 20%. The following colour coding applies:

Colour	Category
Dark red	More than 50%
Red	Between 30% and 50%
Orange	Between 10% and 30%
Yellow	Between -10% and 10%
Light green	Between -30% and -10%
Green	Between -50% and -30%
Dark green	Less than -50%
White	Not used

N.B.: The interpretation of this map is to be done in parallel with [the graph in funnel plot](#) (p.28)

Specialists in training - Imaging of the head (without angiography)

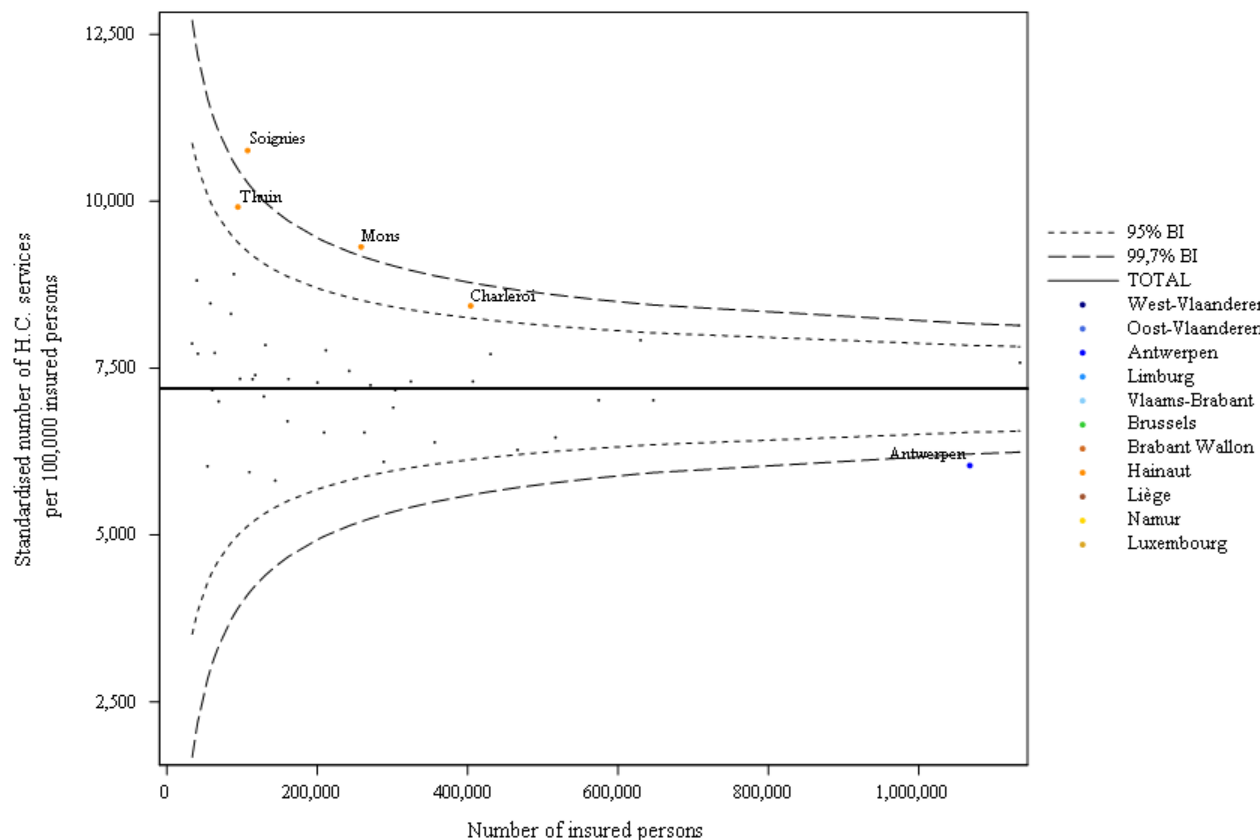


Map showing distribution of standardised expenditure, by district

On this map of Belgium, thin lines show the boundaries of the districts, while thick lines show the provincial borders. The districts are coloured using a colour scale based on the level of expenditure in the district compared to Belgian national (overall) expenditure. This ratio is expressed as a percentage: e.g. 0% if expenditure in the district is equal to the overall expenditure, 20% if it is 20% higher, and -20% if it is 20% lower. The percentages are calculated using the standardised expenditure of the last year analysed and are displayed in bands of 20%. The following colour coding applies:

Colour	Category
Dark red	More than 50%
Red	Between 30% and 50%
Orange	Between 10% and 30%
Yellow	Between - 10% and 10%
Light green	Between -30% and -10%
Green	Between -50% and - 30%
Dark green	Less than -50%
White	No expenditure

Specialists in training - Imaging of the head (without angiography)



In this graph, the standardised rate of use in a district is positioned versus the size of its population. Besides the dots representing the districts, 95% and 99.7% **confidence intervals** are also shown on the graph. These are dependent of the size of the districts. The thicker horizontal line shows the national standardised rate of use. The outlier districts are identified as those districts that fall outside the 99.7% confidence intervals, the zone between the 95% and 99.7% confidence intervals being considered as “warning zone”.

N.B.: The interpretation of this graph is to be done in parallel with the [map of the distribution of rates of use](#) (p.26)

‘Funnel plot’ showing the standardised rates of use by district, by the number of insured persons

J. Standardised healthcare expenditure borne by the insurance

	TOTAL
<i>Average number of interventions per year</i>	819.329
Average annual expenditure (€)	73.677.028
Average cost per intervention (€)	89,92
Average annual expenditure per insured (€)	6,43
Max/Min Ratio* of expenditure per insured (by region)	1,16
Max/Min Ratio* of expenditure per insured (by district)	1,87

* An 'NA' result indicates a ratio which cannot be calculated, i.e. the minimum value = zero (cf. E. Standardised rate of use by sex and age group)

Specialists in training - Imaging of the head (without angiography)

		Standardised expenditure (per insured)
Provinces	West Flanders	6,13 €
	East Flanders	6,33 €
	Antwerp	5,52 €
	Limburg	6,78 €
	Flemish Brabant	6,10 €
	Brussels	6,80 €
	Walloon Brabant	6,58 €
	Hainaut	7,48 €
	Liège	6,94 €
	Namur	6,56 €
	Luxembourg	7,09 €
Regions	Flanders	6,08 €
	Brussels	6,80 €
	Wallonia	7,05 €
TOTAL		6,43 €

Regional and provincial distribution of standardised expenditure (2021)

Specialists in training - Imaging of the head (without angiography)

Nomenclature	2011	2012	2013	2014	2015	2016	2017	2018	2019	2020	2021	Average annual growth rate
455630-455641	30,17	30,57	30,29	30,82	30,89	30,92	30,94	31,31	31,40	31,68	31,99	0,59%
455696-455700	12,52	12,67	12,57	12,77	12,80	12,81	12,82	12,95	12,96	13,07	13,20	0,52%
458673-458684	87,48	88,50	89,60	91,06	91,25	91,25	90,76	92,23	92,32	92,29	92,95	0,61%
458732-458743	134,10	135,64	137,25	139,36	139,75	139,80	139,00	141,43	141,57	142,80	144,11	0,72%
459395-459406	87,75	89,46	90,65	92,02	92,22	92,21	92,16	93,17	93,26	94,08	94,86	0,78%
459535-459546	245,75	250,00	252,91	256,73	257,46	257,86	258,34	261,26	262,63	262,67	265,33	0,77%
459675-459686	0,00	88,24	89,35	90,80	90,99	90,83	90,25	91,78	91,78	92,57	93,41	0,64%
459690-459701	0,00	56,32	57,01	57,95	58,06	58,12	57,82	58,82	58,92	59,44	60,00	0,70%
459874-459885	0,00	0,00	0,00	0,00	0,00	91,01	90,49	91,91	92,10	92,82	93,49	0,54%
460375-460386	53,71	53,90	53,38	53,98	54,25	54,21	53,56	54,03	54,14	54,47	54,84	0,21%
466631-466642	29,93	30,26	29,99	30,49	30,49	30,50	30,46	30,87	30,90	30,95	31,22	0,42%
469792-469803	53,66	53,93	53,42	54,24	54,34	54,34	53,66	54,19	54,20	54,26	54,54	0,16%

Change over time in expenditure, by service and by nomenclature code

4. KEY DATA SUMMARY

		TOTAL
PROVIDERS & PRESCRIBERS		
Main healthcare providers:	Radiology	98,80%
Main prescribers:	Specialists in training	18,58%
RATE OF USE		
Average number of interventions (per year)		819.329
Standardised rate of use (per 100 000 insured persons)		7146,24
≥ 2 occurrences per patient (2019) ⁴		23,5%
Percentage of outpatient care		73,13%
POPULATION		
Median age		61 years
Max/min ratio ⁵ of the median age (by district)		1,23
Percentage of women		54,77%
Ratio Preferential rate/General rate		1,51
TRENDS		
Trend (2011-2021)		-0,90%
Trend ⁶ (2011-2019)		-0,66%
Trend ⁶ (2019-2021)		-1,87%
		NS
GEOGRAPHICAL VARIATIONS		
Coefficient of variation ⁶ (2011-2013)		9,13
Coefficient of variation ⁶ (2019-2021)		14,61
		NS
Max/min ⁵ Ratio of number of interventions ⁶ (per 100 000 insured persons, by region)		1,17
Max/min Ratio ⁵ of number of interventions (per 100 000 insured persons, by district)		1,85
DIRECT EXPENDITURE		
Average annual expenditure		73.677.028 €
Average annual expenditure per insured		6,43 €
Max/Min Ratio ⁵ of expenditure per insured (by region)		1,16
Max/Min Ratio ⁵ of expenditure per insured (by district)		1,87
Average cost of interventions		89,92 €
CODING VARIATIONS & PRACTICE ALTERNATIVES⁴		
Variations in practice coding ⁶ (by province)		Yes ***
Variations in the choice of practice alternatives ⁶ (by province)		Yes ***

⁴ More detailed results are shown in a document enclosed to this report.

⁵ An 'NA' result indicates a ratio, which cannot be calculated, i.e. the minimum value equals zero.

⁶ If the result(s) show(s) a significant difference, the level of statistical significance is symbolized by one to three asterisks (increasingly significant). Otherwise, NS is displayed (not significant). 'NA' indicates the test is not applicable.

5. APPENDICES

A. Analysis of variance (ANOVA), except Brussels

Statistical significance of the differences observed in 2021		
<i>By region?</i>	Yes	**
<i>By sex?</i>	Yes	***
<i>By reimbursement scheme?</i>	Yes	***
<i>By sex and per region?</i>	No	NS
<i>By reimbursement scheme and per region?</i>	No	NS
<i>By sex and per reimbursement scheme?</i>	No	NS
<i>By sex and reimbursement scheme and per region?</i>	No	NS

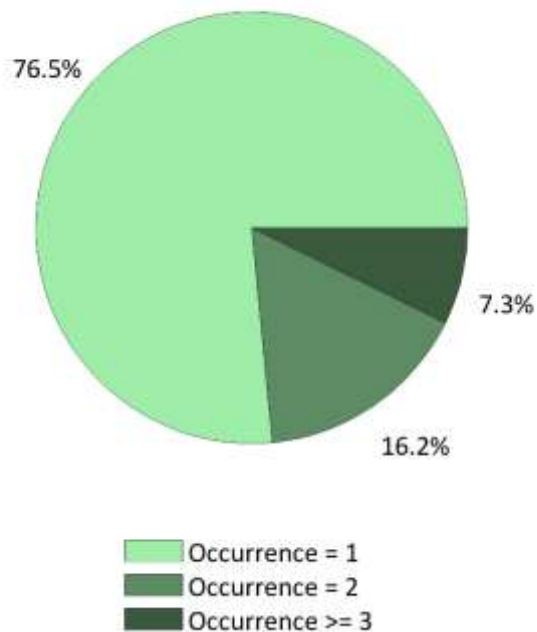
In order to be able to assess the significance of the observed differences, a linear mixed **ANOVA** model was fitted to the data of all districts of the Walloon and Flemish regions, after standardising for age. The model has region, sex and reimbursement scheme as fixed effects and also contains all two-way and three-way interactions between these effects.

In order to interpret the model correctly, first the three-way interaction should be evaluated, followed by the two-way interactions and finally by the main effects. If the three-way interaction is significant, the interpretation of the model should be done at this level only and the two-way interactions and main effects should not be interpreted. If the three-way interaction is not significant, the two-way interactions are evaluated. Every main effects that appears in a significant interaction should be interpreted at the level of the interaction and not at the level of that main effect. Main effects can only be interpreted directly if they don't appear in a significant interaction.

The **asterisks** represent the level of statistical significance of the tests: * P-value $\leq 0,05$ / ** P-value $\leq 0,01$ / *** P-value $\leq 0,001$ or NS for a non-significant result.

B. Frequency of practice occurrences

Frequency	Per year	Per day
2 occurrences	16,2%	4,9%
≥ 3 occurrences	7,3%	0,2%
≥ 2 occurrences	23,5%	5,1%



Distribution of practice recurrences per year (2019)

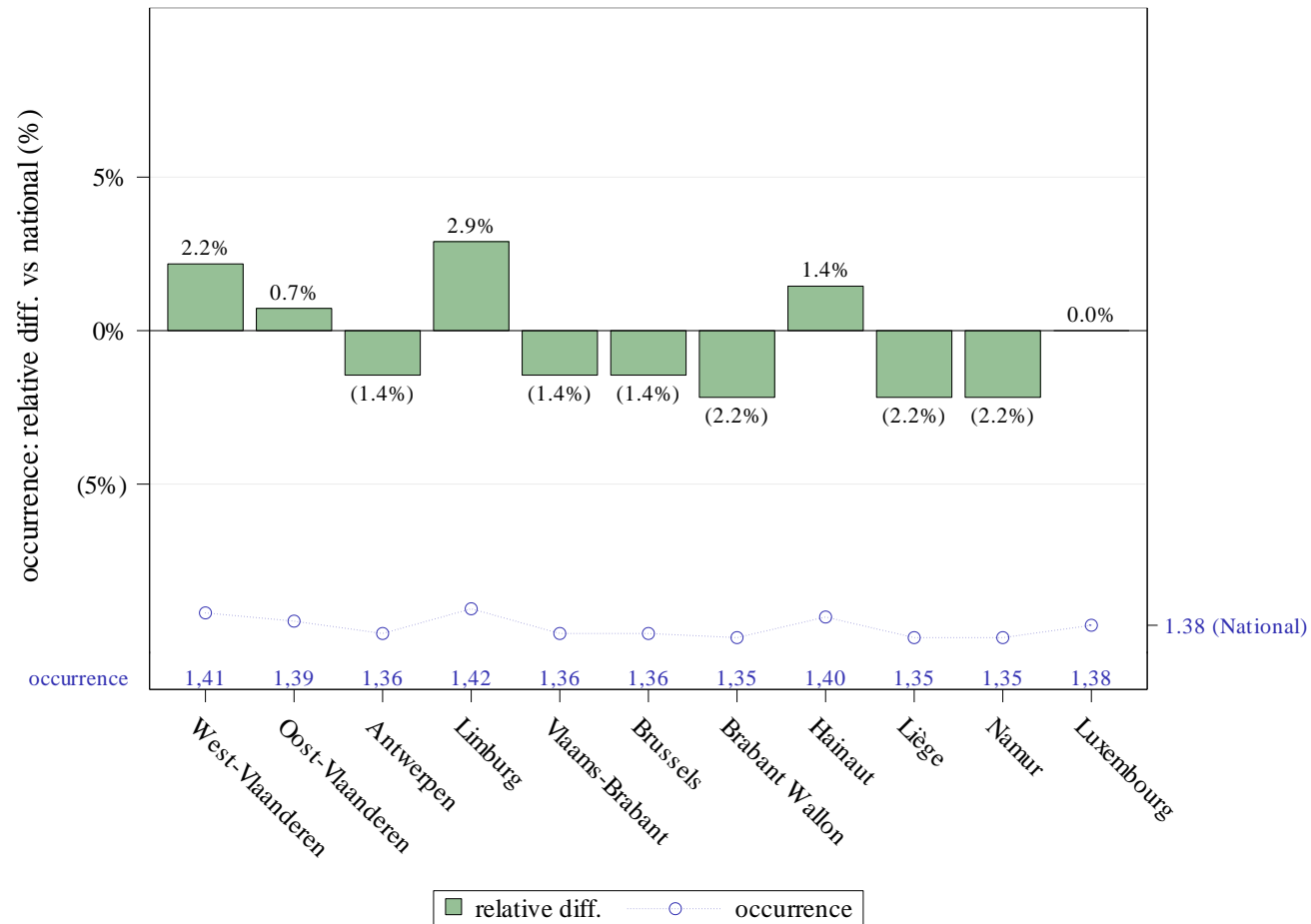
Some practices may be billed several times for the same patient in the same year or even on the same day. This may be due to a **repetition of the practice**, but also to an anatomical effect, which may lead, depending on the organ concerned, to performing the same practice **bilaterally**, which may therefore cause a double occurrence on the same day.

In order to interpret the results per day validly, it is useful to note that the same patient may be counted several times if, for example, he or she has received two identical services simultaneously, twice a year.

These frequency analyses of occurrences are carried out over the year **2019** using the following databases: Documents P, ADH and SHA.

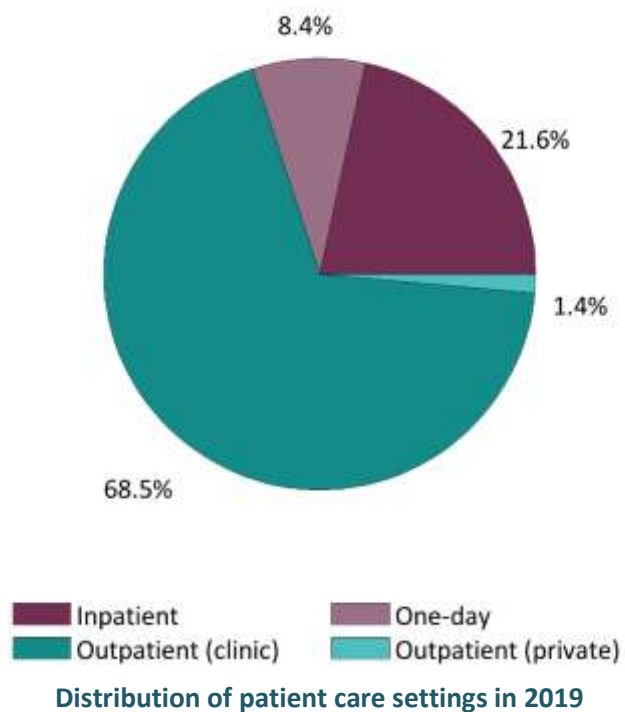
Values « **n.a.** » are indicated if the data were not available at the time of this report.

Specialists in training - Imaging of the head (without angiography)



Frequency of practice occurrences by province and variation vs national value (2019)

C. Patient care settings



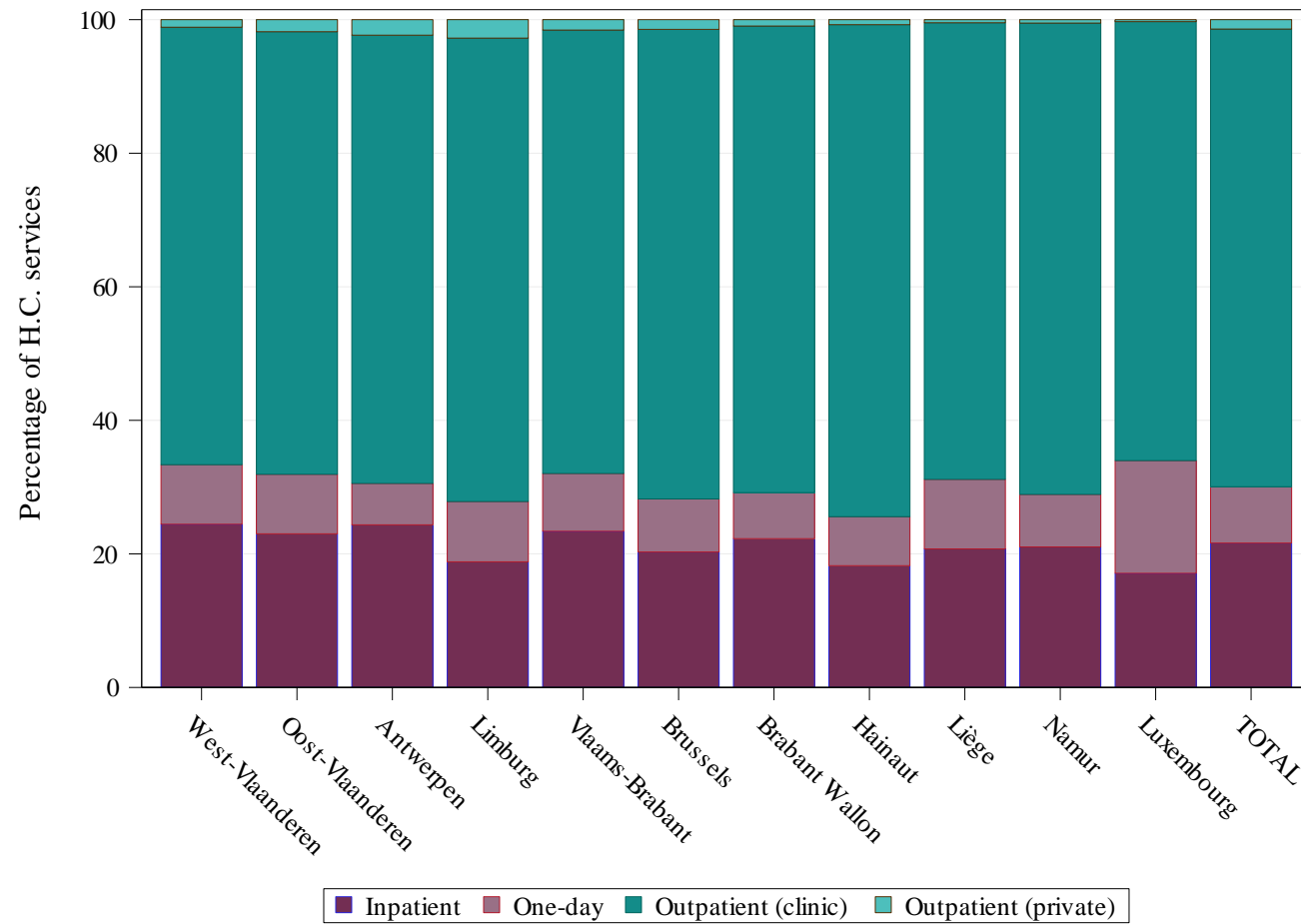
Care Settings	
Outpatient (private)	1,4%
Outpatient (polyclinic)	68,5%
(Day) Hospital	8,4%
Hospital (stay)	21,6%

In addition to the chapter on [standardised inpatient and outpatient use rates](#) (see p.16), the analysis of patient care settings can be refined by identifying the outpatient (private and polyclinic) and inpatient (day or standard hospitalisation) sub-sectors.

These analyses are carried out over the year **2019** using the following databases: Documents P, ADH and SHA.

Values « **n.a.** » are indicated if the data were not available at the time of this report.

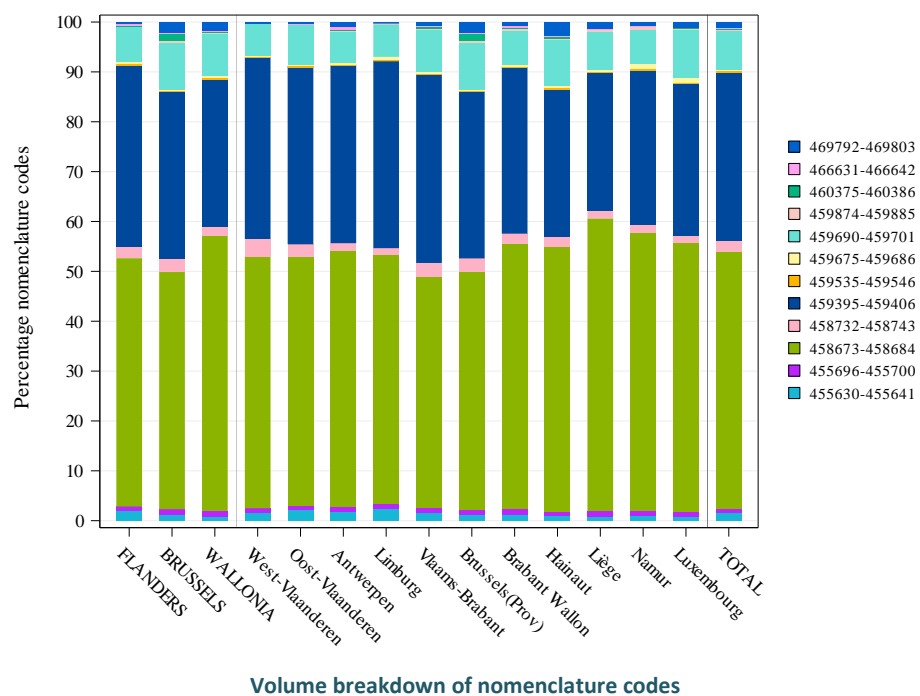
Specialists in training - Imaging of the head (without angiography)



Distribution of patient care settings by province (2019)

D. Coding variations and practice alternatives

➔ Variations in coding:

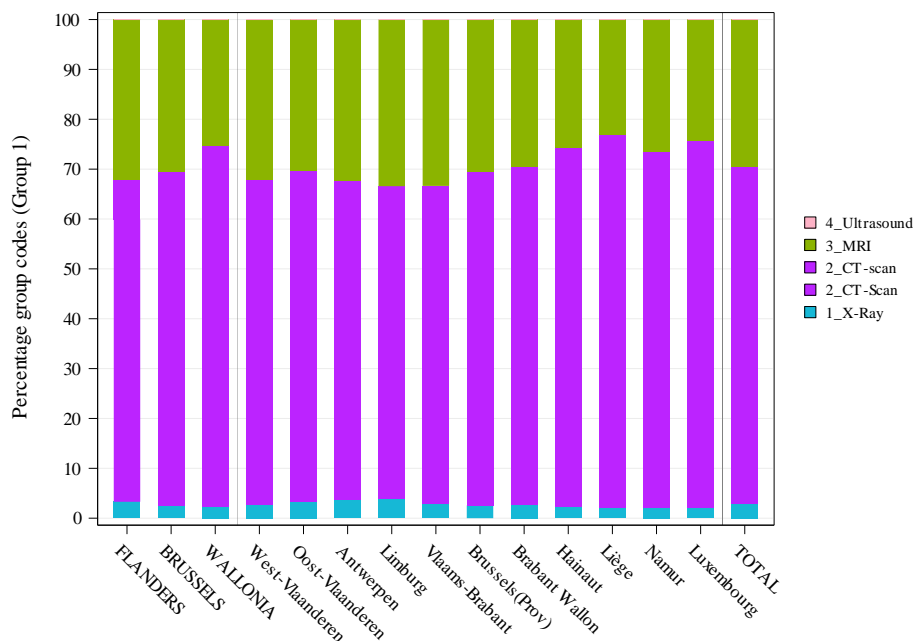


[Due to the large number of nomenclature codes selected for this analysis, we cannot include them in the legend here. We therefore invite you to read the details concerning them on page 4 of this report.]

Significance	By region	By province
Use of Nomenclature codes ⁷	***	***

⁷ The calculation of significance is carried out here by comparing the geographical differences in the use of the different nomenclature codes to code the practice.

→ Variations in practice alternatives (Group 1):



Breakdown of choice for practice alternatives

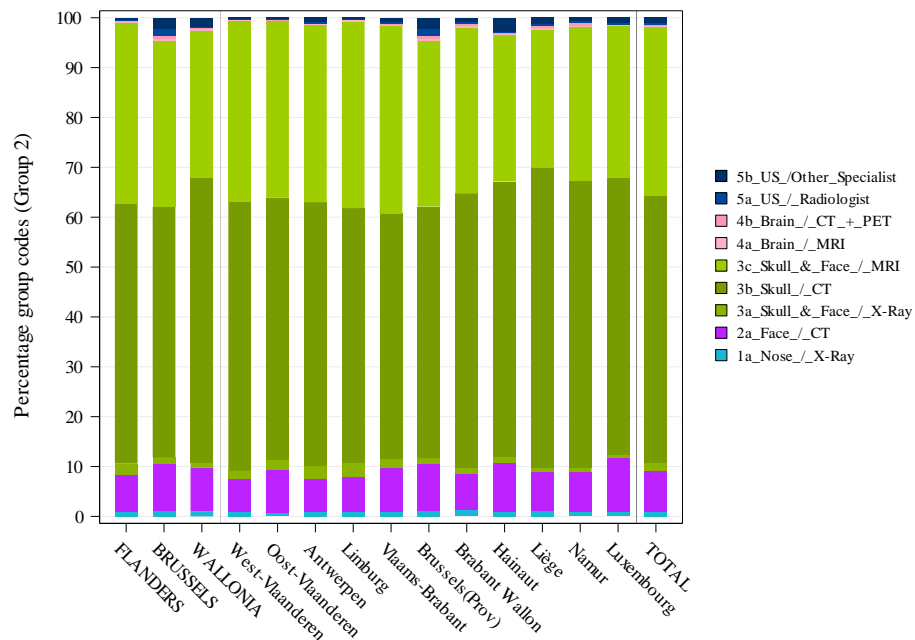
Significance	By region	By province
Choice of Practice alternatives	***	***

Combined codes	Groupings
455630-455641	1_X-Ray
455696-455700	1_X-Ray
458673-458684	2_CT-Scan
458732-458743	2_CT-Scan
459395-459406	3_MRI
459535-459546	3_MRI
459675-459686	2_CT-Scan
459690-459701	2_CT-scan
459874-459885	2_CT-scan
460375-460386	4_Ultrasound
466631-466642	1_X-Ray
469792-469803	4_Ultrasound

According to the nature of the practice and the analytical tools available, it may be possible to identify and define alternatives for carrying out the practice. In this case, the nomenclature codes defined for the analysis of the practice are grouped together with the aim of analysing whether or not the choices of these alternatives are homogeneous across the territory. The calculation of significance displayed in the table is carried out by comparing these groups of codes with each other.

Specialists in training - Imaging of the head (without angiography)

➔ Variations in practice alternatives (Group 2) :



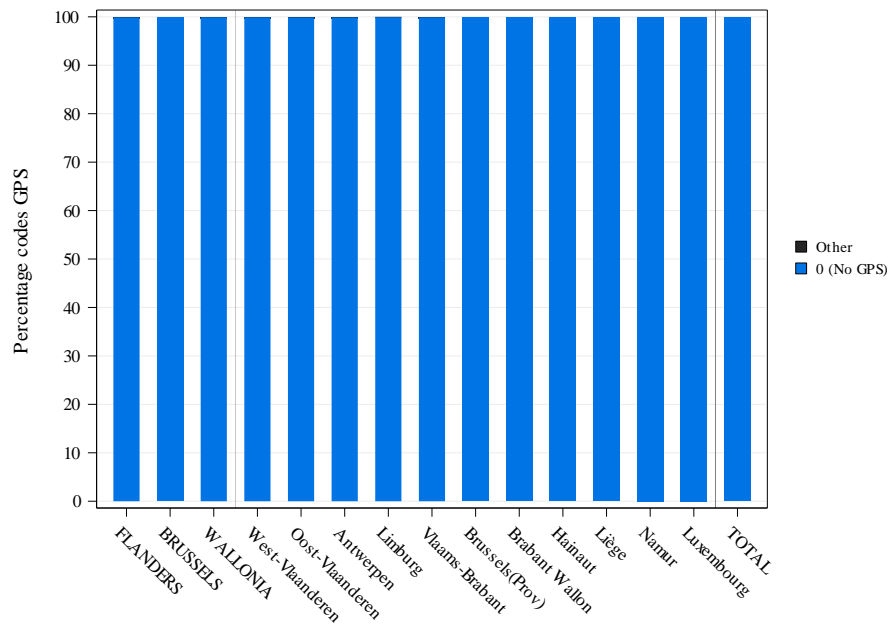
Breakdown of choice for practice alternatives

Significance	By region	By province
Choice of Practice alternatives	***	***

Combined codes	Groupings
455630-455641	3a_Skull_&_Face/_X-Ray
455696-455700	1a_Nose/_X-Ray
458673-458684	3b_Skull/_CT
458732-458743	3b_Skull/_CT
459395-459406	3c_Skull_&_Face/_MRI
459535-459546	4a_Brain/_MRI
459675-459686	2a_Face/_CT
459690-459701	2a_Face/_CT
459874-459885	4b_Brain/_CT+_PET
460375-460386	5a_US/_Radiologist
466631-466642	3a_Skull_&_Face/_X-Ray
469792-469803	5b_US/_Other_Specialist

Specialists in training - Imaging of the head (without angiography)

→ Variation in the use of Global Payment with Standardisation (GPS) :



Pseudocodes	Label
-------------	-------

Breakdown by volume of pseudocodes of GPS

Significance	By region	By province
Use of Global Payment with Standardisation ⁸	NS	*

⁸ The calculation of significance is carried out here by comparing the use of Global Payment with Standardisation as a whole compared to the non-use of these packages.